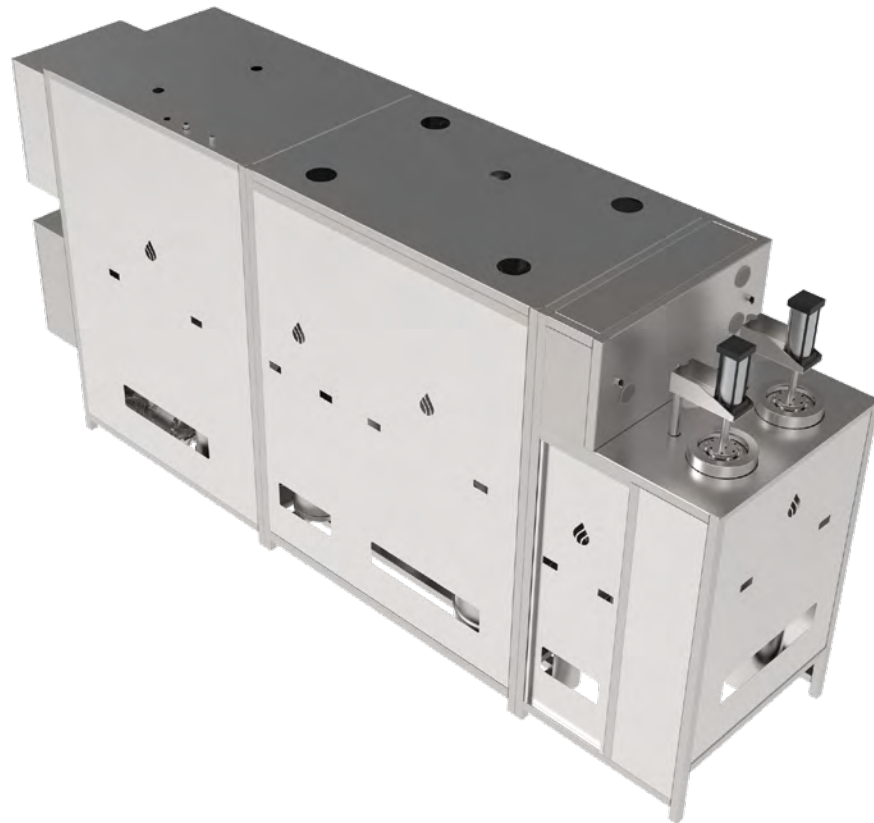


Maximum Flexibility.
Future-Proof Resilience.

**CO₂ & Multi-Solvent
Extraction Systems**



EXTRACTION

- Vessel volume: 20 L / 45 L combinations
- Total extraction vessel volume: Up to 90 L †
- Liquid CO₂ pump: Up to 10 kg/minute
- Integrated multi-solvent system
- Temperature range: 10–150°F (-12–65°C)
- Pressure range (standard configuration):
 - MAWP: 2,200 psi (151 bar)
 - Operating pressure: 500–2,000 psi (35–137 bar)
- Pressure range (high-pressure upgrade):
 - MAWP: 5,000 psi (345 bar)
 - Operating pressure: 500–4,800 psi (35–331 bar)



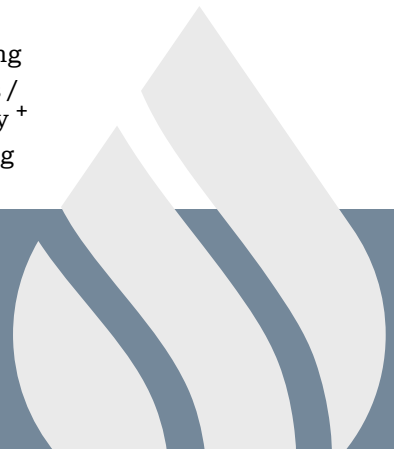
CO₂ RECOVERY & STORAGE

- Closed-loop CO₂
- CO₂ condenser
- CO₂ remediation filters



CONTROL PANEL

- Multiple user levels
- Real-time monitoring
- Remote diagnostics / remote connectivity †
- Live batch recording





SEPARATION & COLLECTION

- Continuous CO₂ purification
- Pressure range: 300–720 psi (21–50 bar)
- Temperature range: 40–100°F (4.4–38°C)
- Dedicated terpene collection
- Separate collection lines for each extraction vessel †



SPECIFICATIONS

- Weight: 5,400–6,140 lbs (2,450–2,785 kg) †
- Footprint (LxWxH): 230" x 48" x 95" (5.8m x 1.2m x 2.4m)



SITE REQUIREMENTS

- Pneumatic supply ISO 8573-1 [5:4:3] @120 psi 12 SCFM
- Broadband internet connection
- Power requirements (North America): 460V 3ϕ 60Hz
- Power requirements (EU, AUS, NZ): 400V 3ϕ 50Hz
- Avg. operating power: 58 kWh / Max power: 77 kWh



ADDITIONAL STANDARD FEATURES

- Automated process controls
- 304 stainless-steel contact surfaces
- Flow meter
- Ethanol wash sequence / CIP compatibility
- Integrated CO₂ (R744) refrigeration
- HMI designed to ISA 101.01
- Automated programmable start-up & shutdown
- 2 x 20 L pre-loadable biomass cartridges
- Pre-loaded recipes
- User-programmable recipes
- Over-the-air software updates⁺
- Remote diagnostics capability⁺
- Managed project implementation
- Professional commissioning
- On-site operator training



CONTINUOUS OPERATION

- Continuous cyclone separation †
- Dual extractor configurations



CERTIFICATIONS, COMPLIANCE & WARRANTY

- | | |
|-------------|----------|
| ASME/NB | CSA-CRN |
| PED-CE | CUL/UL |
| AS/NZS 1200 | EU-GMP † |
| UKCA | |

- Lifetime warranty^Δ on all pressure vessels
- One-year warranty on all other components
- Service plans available



OPTIONAL FEATURES

- 316 stainless-steel contact surfaces
- CIP (clean-in-place) system ‡
- In-line extract filtration
- Extended service plan
- Additional biomass cartridges
- Bulk CO₂ storage solutions
- Vessel expansion
- Higher pressure configurations
- Managed door-to-door logistics



OPTIONAL GMP SUPPORT ASSETS

We can provide the following GMP documents: URS, FRS, requirement traceability matrix, PHA, FAT, SAT, IQ, OQ, calibration certificates, technical design documents, wetted materials traceability, software disaster recovery plan.



GMP

† Depending on configuration

+ Requires broadband internet connection

Δ Defined as 100,000 cycles

‡ Third-party system